

Field Measurements of Waves in the Harbour of Helgoland

Client:
 Uetersener Eisenbahn AG



Period:
 01/2010 – 01/2011

Project Description:
 For further planning the wave impact in the southern harbour of Helgoland has to be measured. There two wave gauges have been installed.

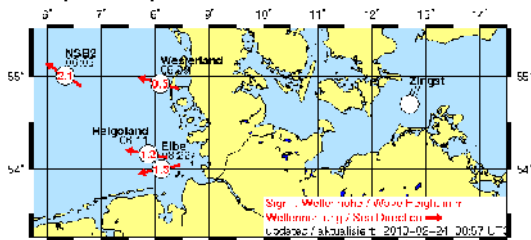
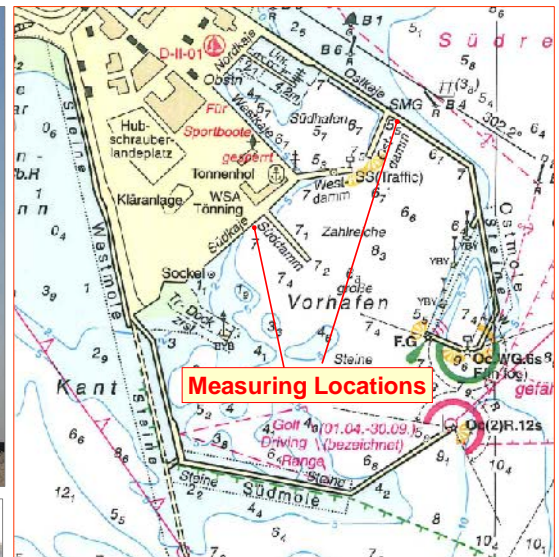


Measurement Requirements

- n Independent Measuring Systems
- n Sampling Rate: 20 Hz
- n Measuring Period: 6 months
- n Video camera
- n Data Transfer via UMTS
- n Data Storage with chronological Synchronism

Performances:

- n Planning and installation of instruments
- n Operation of 2 measuring locations
- n Documentation and data analysis
- n Analysis of results
- n Expert report



Helgoland			
Position	44° 34' N	10° 28' E	
Wasser	96	Wasser	101
2210	22 24	0511	
Letzte Messung	1.2.11	1.2.11	
Spezifikation	1.2.11	1.2.11	
Hersteller	1.2.11	1.2.11	
Spezifikation	1.2.11	1.2.11	
Hersteller	1.2.11	1.2.11	

